

Dysart Rd between Gorge Rd W and Obed Ave

October 28, 2019 To November 01, 2019



The data presented here is for information purposes only and should not be considered authoritative for construction, geotechnical, engineering, navigational, legal, or other site-specific uses. The information shared is owned by the Transportation Division of the Engineering Department at the District of Saanich. Accuracy is not guaranteed.

Start Date: 28-Oct-19
 Start Time: 0:16
 Station ID: C0020-01

Location 1: Dysart Rd between Gorge Rd W and Obed Ave

Note:

DATE:	October 28, 2019		October 29, 2019		October 30, 2019		October 31, 2019		November 1, 2019		WK AVG		WK AVG	HOURLY
	MON		TUE		WED		THURS		FRI		NB	SB	CH 1+2	%
Time:	NB	SB	NB	SB	NB	SB	NB	SB	NB	SB	NB	SB		
12-1 AM			1	1	2	0	2	0			2	0	2	0.3%
1-2 AM			0	0	0	0	0	1			0	0	0	0.1%
2-3 AM			0	0	1	0	0	0			0	0	0	0.1%
3-4 AM			1	1	1	1	2	1			1	1	2	0.4%
4-5 AM			1	0	1	1	0	0			1	0	1	0.2%
5-6 AM			2	4	0	5	1	5			1	5	6	0.9%
6-7 AM			3	6	8	8	4	6			5	7	12	1.8%
7-8 AM			18	24	12	26	10	23			13	24	38	5.7%
8-9 AM			23	26	16	24	21	24			20	25	45	6.7%
9-10 AM			8	20	15	16	14	21			12	19	31	4.7%
10-11 AM			24	18	15	18	17	16			19	17	36	5.4%
11-12 PM			19	18	20	23	25	17			21	19	41	6.1%
12-1 PM			31	25	24	24	21	18			25	22	48	7.2%
1-2 PM			15	25	17	27	24	19			19	24	42	6.4%
2-3 PM			27	14	18	25	22	21			22	20	42	6.4%
3-4 PM			38	33	33	15	50	25			40	24	65	9.7%
4-5 PM			52	24	49	36	43	24			48	28	76	11.5%
5-6 PM			38	14	41	26	25	21			35	20	55	8.3%
6-7 PM			17	11	26	24	13	20			19	18	37	5.6%
7-8 PM			16	14	18	17	3	18			12	16	29	4.3%
8-9 PM			9	6	9	4	20	21			13	10	23	3.5%
9-10 PM			7	7	10	10	9	16			9	11	20	3.0%
10-11 PM			3	2	4	3	5	8			4	4	8	1.3%
11-12 AM			2	2	1	2	3	5			2	3	5	0.8%
LANES			355	295	341	335	334	330			343	320	663	100.0%
TOTAL			650		676		664				670			
	MON		TUE		WED		THURS		FRI		WK AVG			

PEAK HOUR					TOTAL VEHICALS-PEAK PERIODS		2 HOUR PEAK INTERVALS			
MAX. 7 - 9 am PEAK HOUR	45	⇒	6.7%	between 8-9 AM	302	⇒ 6 HR TOTAL	2 HR AM (7 - 9 AM)			
MAX. 7 - 11 am PEAK HOUR	45	⇒	6.7%	between 8-9 AM	213	⇒ 4 HR TOTAL	VEH / HR	VEH / 2HR	2 HR %	
							7-8 AM	38	82	12.4%
							8-9 AM	45		
MAX. 11 am - 1 pm PEAK HOUR	48	⇒	7.2%	between 12-1 PM	24 HOUR FACTORS					
MAX. 11 am - 3 pm PEAK HOUR	48	⇒	7.2%	between 12-1 PM						
MAX. 4 - 6 pm PEAK HOUR	76	⇒	11.5%	between 4-5 PM	2.20	⇒ 6-24 HR FACT.	2 HR NOON (11 - 1 PM)			
MAX. 3 - 6 pm PEAK HOUR	76	⇒	11.5%	between 4-5 PM	3.11	⇒ 4-24 HR FACT.	VEH / HR	VEH / 2HR	2 HR %	
							11-12 PM	41	88	13.3%
							12-1 PM	48		
							2 HR PM (4 - 6 PM)			
							VEH / HR	VEH / 2HR	2 HR %	
							4-5 PM	76	131	19.7%
							5-6 PM	55		

Dysart Rd between Gorge Rd W and Obed Ave

Northbound

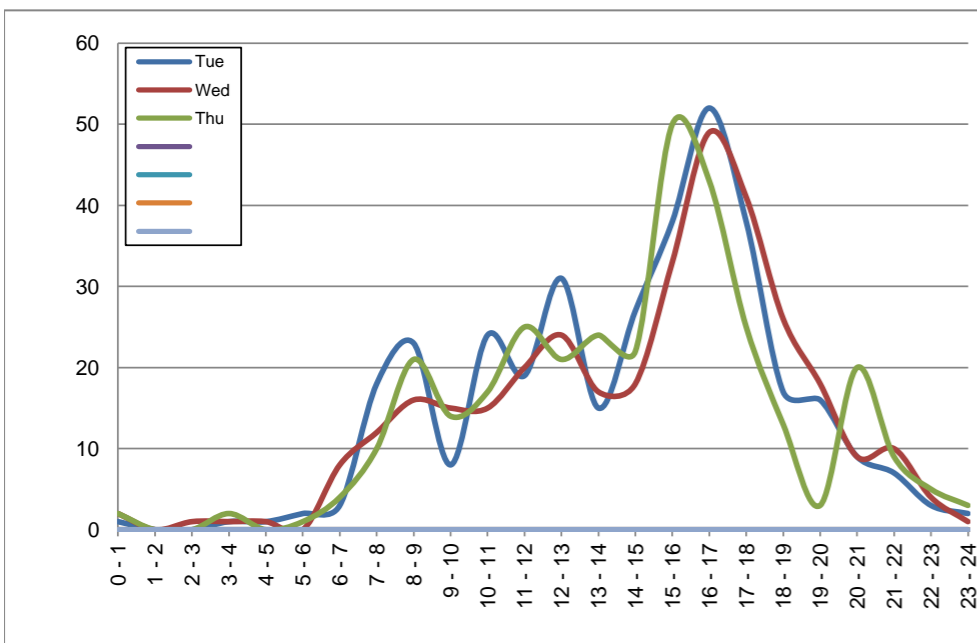
October 29, 2019 to October 31, 2019

Hourly Volumes

Time Period	Tue	Wed	Thu			
	Oct 29	Oct 30	Oct 31			
0 - 1	1	2	2			
1 - 2	0	0	0			
2 - 3	0	1	0			
3 - 4	1	1	2			
4 - 5	1	1	0			
5 - 6	2	0	1			
6 - 7	3	8	4			
7 - 8	18	12	10			
8 - 9	23	16	21			
9 - 10	8	15	14			
10 - 11	24	15	17			
11 - 12	19	20	25			
12 - 13	31	24	21			
13 - 14	15	17	24			
14 - 15	27	18	22			
15 - 16	38	33	50			
16 - 17	52	49	43			
17 - 18	38	41	25			
18 - 19	17	26	13			
19 - 20	16	18	3			
20 - 21	9	9	20			
21 - 22	7	10	9			
22 - 23	3	4	5			
23 - 24	2	1	3			
Day Total	355	341	334			

15-Minute Volumes

Time Start	Tue	Wed	Thu				Time Start	Tue	Wed	Thu			
	Oct 29	Oct 30	Oct 31					Oct 29	Oct 30	Oct 31			
0:00	0	0	0				12:00	4	4	5			
0:15	1	0	1				12:15	11	6	6			
0:30	0	0	1				12:30	11	8	5			
0:45	0	2	0				12:45	5	6	5			
1:00	0	0	0				13:00	2	2	3			
1:15	0	0	0				13:15	7	5	9			
1:30	0	0	0				13:30	4	5	3			
1:45	0	0	0				13:45	2	5	9			
2:00	0	0	0				14:00	10	5	6			
2:15	0	0	0				14:15	7	4	6			
2:30	0	1	0				14:30	7	5	3			
2:45	0	0	0				14:45	3	4	7			
3:00	0	0	0				15:00	9	5	10			
3:15	1	1	1				15:15	8	4	11			
3:30	0	0	0				15:30	5	13	14			
3:45	0	0	1				15:45	16	11	15			
4:00	1	0	0				16:00	12	16	8			
4:15	0	1	0				16:15	13	8	14			
4:30	0	0	0				16:30	10	8	14			
4:45	0	0	0				16:45	17	17	7			
5:00	0	0	0				17:00	9	20	5			
5:15	1	0	0				17:15	13	11	12			
5:30	1	0	1				17:30	10	7	6			
5:45	0	0	0				17:45	6	3	2			
6:00	1	0	0				18:00	4	7	6			
6:15	0	3	0				18:15	6	9	3			
6:30	1	2	3				18:30	4	5	0			
6:45	1	3	1				18:45	3	5	4			
7:00	0	2	1				19:00	5	6	1			
7:15	5	3	2				19:15	4	1	1			
7:30	5	7	3				19:30	4	6	0			
7:45	8	0	4				19:45	3	5	1			
8:00	6	9	10				20:00	3	2	6			
8:15	10	3	4				20:15	0	1	4			
8:30	3	1	3				20:30	4	3	4			
8:45	4	3	4				20:45	2	3	6			
9:00	0	6	4				21:00	2	6	2			
9:15	2	2	5				21:15	2	2	4			
9:30	2	4	5				21:30	2	1	2			
9:45	4	3	0				21:45	1	1	1			
10:00	6	2	4				22:00	3	1	2			
10:15	2	3	2				22:15	0	0	1			
10:30	5	4	8				22:30	0	2	2			
10:45	11	6	3				22:45	0	1	0			
11:00	2	6	8				23:00	0	0	1			
11:15	6	3	4				23:15	2	1	0			
11:30	6	6	5				23:30	0	0	0			
11:45	5	5	8				23:45	0	0	2			



Site notes:

Dysart Rd between Gorge Rd W and Obed Ave

Southbound

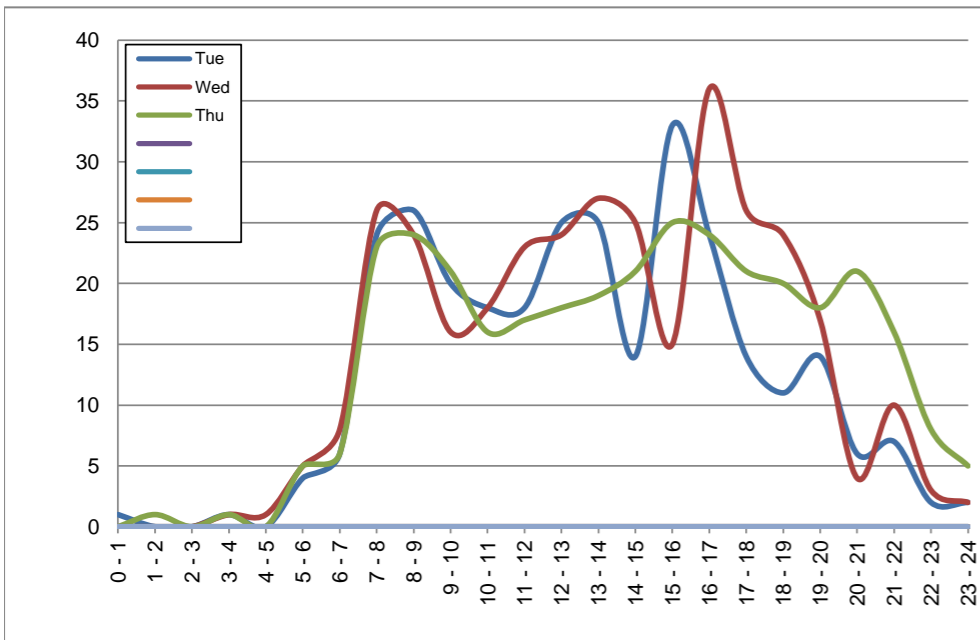
October 29, 2019 to October 31, 2019

Hourly Volumes

Time Period	Tue	Wed	Thu			
	Oct 29	Oct 30	Oct 31			
0 - 1	1	0	0			
1 - 2	0	0	1			
2 - 3	0	0	0			
3 - 4	1	1	1			
4 - 5	0	1	0			
5 - 6	4	5	5			
6 - 7	6	8	6			
7 - 8	24	26	23			
8 - 9	26	24	24			
9 - 10	20	16	21			
10 - 11	18	18	16			
11 - 12	18	23	17			
12 - 13	25	24	18			
13 - 14	25	27	19			
14 - 15	14	25	21			
15 - 16	33	15	25			
16 - 17	24	36	24			
17 - 18	14	26	21			
18 - 19	11	24	20			
19 - 20	14	17	18			
20 - 21	6	4	21			
21 - 22	7	10	16			
22 - 23	2	3	8			
23 - 24	2	2	5			
Day Total	295	335	330			

15-Minute Volumes

Time Start	Tue	Wed	Thu				Time Start	Tue	Wed	Thu			
	Oct 29	Oct 30	Oct 31					Oct 29	Oct 30	Oct 31			
0:00	0	0	0				12:00	6	5	5			
0:15	0	0	0				12:15	7	9	5			
0:30	0	0	0				12:30	4	5	6			
0:45	1	0	0				12:45	8	5	2			
1:00	0	0	0				13:00	12	6	7			
1:15	0	0	0				13:15	3	7	3			
1:30	0	0	1				13:30	8	7	8			
1:45	0	0	0				13:45	2	7	1			
2:00	0	0	0				14:00	6	9	4			
2:15	0	0	0				14:15	3	6	4			
2:30	0	0	0				14:30	3	5	6			
2:45	0	0	0				14:45	2	5	7			
3:00	0	0	0				15:00	7	4	8			
3:15	1	1	1				15:15	12	3	4			
3:30	0	0	0				15:30	8	3	10			
3:45	0	0	0				15:45	6	5	3			
4:00	0	0	0				16:00	7	14	3			
4:15	0	0	0				16:15	11	6	6			
4:30	0	0	0				16:30	3	2	8			
4:45	0	1	0				16:45	3	14	7			
5:00	0	1	0				17:00	4	3	5			
5:15	0	0	0				17:15	6	4	5			
5:30	2	2	4				17:30	4	12	5			
5:45	2	2	1				17:45	0	7	6			
6:00	0	1	1				18:00	1	11	6			
6:15	0	0	0				18:15	3	8	5			
6:30	2	4	2				18:30	1	4	6			
6:45	4	3	3				18:45	6	1	3			
7:00	4	5	7				19:00	6	3	5			
7:15	5	8	8				19:15	1	2	2			
7:30	4	6	3				19:30	3	7	4			
7:45	11	7	5				19:45	4	5	7			
8:00	10	10	8				20:00	2	1	4			
8:15	4	6	3				20:15	2	2	4			
8:30	8	3	6				20:30	2	0	9			
8:45	4	5	7				20:45	0	1	4			
9:00	5	5	4				21:00	3	5	2			
9:15	2	5	5				21:15	1	4	6			
9:30	7	1	8				21:30	3	0	6			
9:45	6	5	4				21:45	0	1	2			
10:00	1	5	7				22:00	1	1	2			
10:15	7	5	4				22:15	0	1	2			
10:30	5	6	5				22:30	1	1	3			
10:45	5	2	0				22:45	0	0	1			
11:00	3	5	3				23:00	0	1	2			
11:15	5	6	7				23:15	1	0	3			
11:30	4	9	1				23:30	0	0	0			
11:45	6	3	6				23:45	1	1	0			



Site notes:

Vehicle Speed Summary

Saanich Engineering Department

Count Id: C0020-01

Filename: Dysart Rd between Gorge Rd W and Obed Ave-Oct-2019.xlsm

Location: Dysart Rd between Gorge Rd W and Obed Ave

Note:

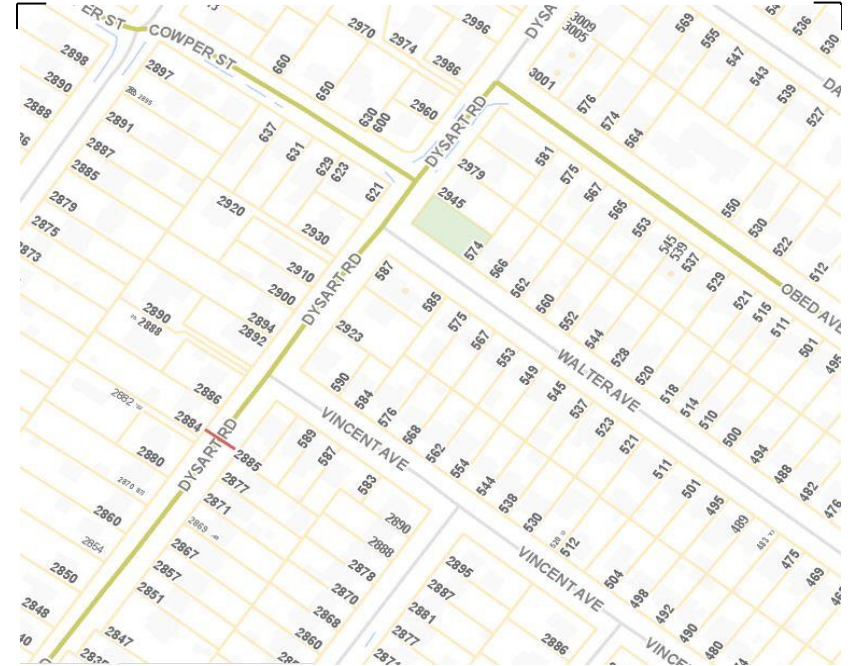
Direction: **North-South**

Dates: **October 28, 2019 To November 01, 2019**

Filtered data

AVG. SPEED	25 mph	40 km/h
50 % SPEED	25 mph	41 km/h
85 % SPEED	30 mph	49 km/h
95 % SPEED	33 mph	53 km/h

Location Map



Dysart Rd between Gorge Rd W and Obed Ave

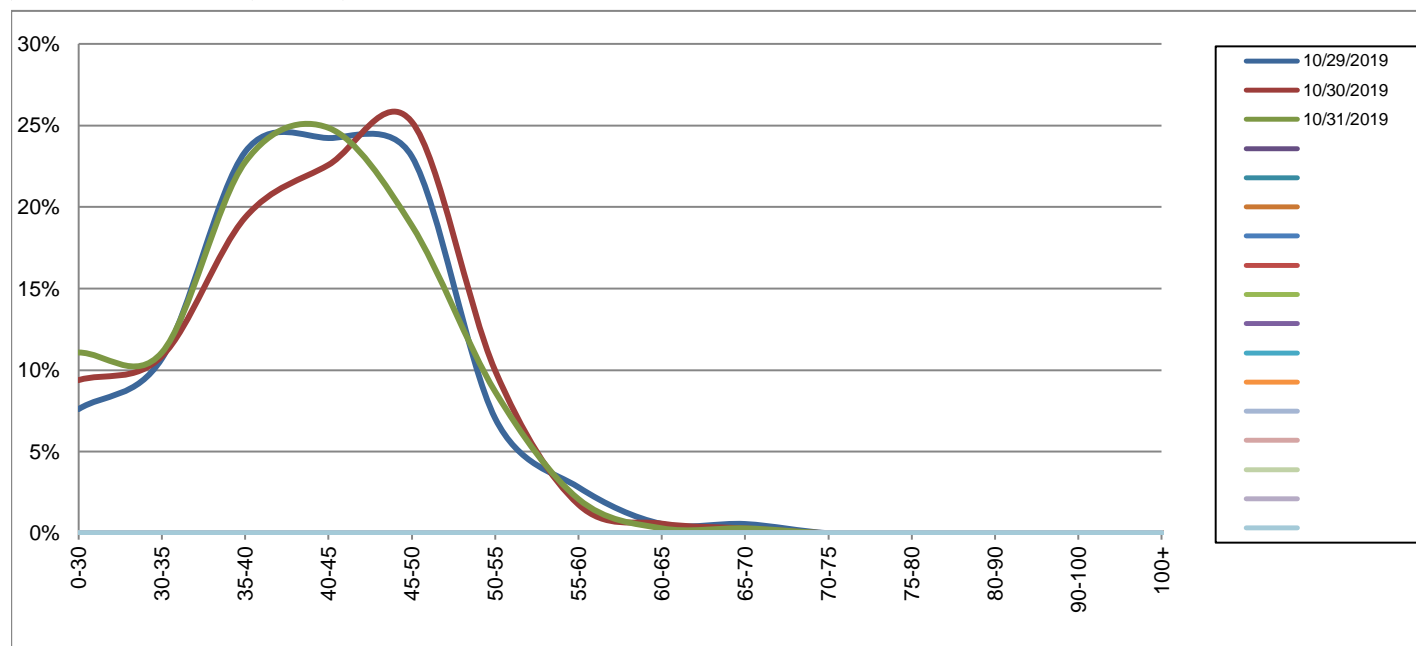
Northbound

October 29, 2019 to October 31, 2019

Daily Speed Bin Percentages															Daily Speed Bin Volumes														Total	Avg.
Bin #	1	2	3	4	5	6	7	8	9	10	11	12	13	14	1	2	3	4	5	6	7	8	9	10	11	12	13	14	Volume	Speed
Bin Speeds	0-30	30-35	35-40	40-45	45-50	50-55	55-60	60-65	65-70	70-75	75-80	80-90	90-100	100+	0-30	30-35	35-40	40-45	45-50	50-55	55-60	60-65	65-70	70-75	75-80	80-90	90-100	100+		
10/29/2019	7.6%	10.7%	23.4%	24.2%	23.1%	7.0%	2.8%	0.6%	0.6%	0.0%	0.0%	0.0%	0.0%	0.0%	27	38	83	86	82	25	10	2	2	0	0	0	0	0	355	41
10/30/2019	9.4%	10.9%	19.4%	22.6%	25.2%	10.0%	1.8%	0.6%	0.3%	0.0%	0.0%	0.0%	0.0%	0.0%	32	37	66	77	86	34	6	2	1	0	0	0	0	0	341	41
10/31/2019	11.1%	11.1%	22.8%	24.9%	18.9%	8.7%	2.1%	0.3%	0.3%	0.0%	0.0%	0.0%	0.0%	0.0%	37	37	76	83	63	29	7	1	1	0	0	0	0	0	334	39
Total	9.3%	10.9%	21.8%	23.9%	22.4%	8.5%	2.2%	0.5%	0.4%	0.0%	0.0%	0.0%	0.0%	0.0%	96	112	225	246	231	88	23	5	4	0	0	0	0	0	1030	40

Speed Data Summary

Bin #	1	2	3	4	5	6	7	8	9	10	11	12	13	14	Total
Bin Speeds	0-30	30-35	35-40	40-45	45-50	50-55	55-60	60-65	65-70	70-75	75-80	80-90	90-100	100+	
Survey Total	96	112	225	246	231	88	23	5	4	0	0	0	0	0	1030
% Total	9.3%	10.9%	21.8%	23.9%	22.4%	8.5%	2.2%	0.5%	0.4%	0.0%	0.0%	0.0%	0.0%	0.0%	100%
Accumulated %	9.3%	20.2%	42.0%	65.9%	88.3%	96.9%	99.1%	99.6%	100.0%	100.0%	100.0%	100.0%	100.0%	100%	
Inverse Accum. %	90.7%	79.8%	58.0%	34.1%	11.7%	3.1%	0.9%	0.4%	0.0%	0.0%	0.0%	0.0%	0.0%	0.0%	
Average Speed	40 KM/H														



Site notes:

Dysart Rd between Gorge Rd W and Obed Ave

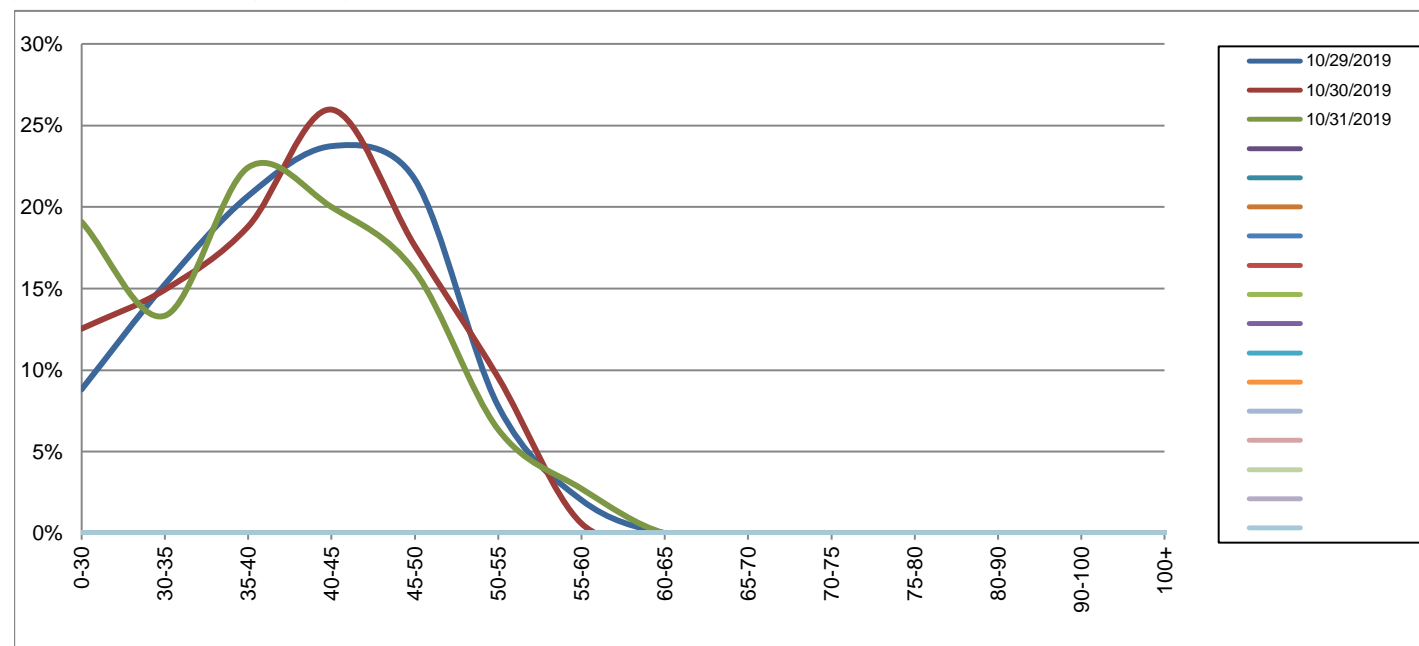
Southbound

October 29, 2019 to October 31, 2019

Daily Speed Bin Percentages															Daily Speed Bin Volumes														Total	Avg.
Bin #	1	2	3	4	5	6	7	8	9	10	11	12	13	14	1	2	3	4	5	6	7	8	9	10	11	12	13	14	Volume	Speed
Bin Speeds	0-30	30-35	35-40	40-45	45-50	50-55	55-60	60-65	65-70	70-75	75-80	80-90	90-100	100+	0-30	30-35	35-40	40-45	45-50	50-55	55-60	60-65	65-70	70-75	75-80	80-90	90-100	100+		
10/29/2019	8.8%	15.3%	20.7%	23.7%	21.7%	7.8%	2.0%	0.0%	0.0%	0.0%	0.0%	0.0%	0.0%	0.0%	26	45	61	70	64	23	6	0	0	0	0	0	0	0	295	40
10/30/2019	12.5%	14.9%	18.8%	26.0%	17.6%	9.6%	0.6%	0.0%	0.0%	0.0%	0.0%	0.0%	0.0%	0.0%	42	50	63	87	59	32	2	0	0	0	0	0	0	0	335	39
10/31/2019	19.1%	13.3%	22.4%	20.0%	16.1%	6.4%	2.7%	0.0%	0.0%	0.0%	0.0%	0.0%	0.0%	0.0%	63	44	74	66	53	21	9	0	0	0	0	0	0	0	330	37
Total	13.6%	14.5%	20.6%	23.2%	18.3%	7.9%	1.8%	0.0%	0.0%	0.0%	0.0%	0.0%	0.0%	0.0%	131	139	198	223	176	76	17	0	0	0	0	0	0	960	38	

Speed Data Summary

Bin #	1	2	3	4	5	6	7	8	9	10	11	12	13	14	Total
Bin Speeds	0-30	30-35	35-40	40-45	45-50	50-55	55-60	60-65	65-70	70-75	75-80	80-90	90-100	100+	
Survey Total	131	139	198	223	176	76	17	0	0	0	0	0	0	0	960
% Total	13.6%	14.5%	20.6%	23.2%	18.3%	7.9%	1.8%	0.0%	0.0%	0.0%	0.0%	0.0%	0.0%	0.0%	100%
Accumulated %	13.6%	28.1%	48.8%	72.0%	90.3%	98.2%	100.0%	100.0%	100.0%	100.0%	100.0%	100.0%	100.0%	100.0%	
Inverse Accum. %	86.4%	71.9%	51.3%	28.0%	9.7%	1.8%	0.0%	0.0%	0.0%	0.0%	0.0%	0.0%	0.0%	0.0%	
Average Speed	38 KM/H														



Site notes:

Dysart Rd between Gorge Rd W and Obed Ave

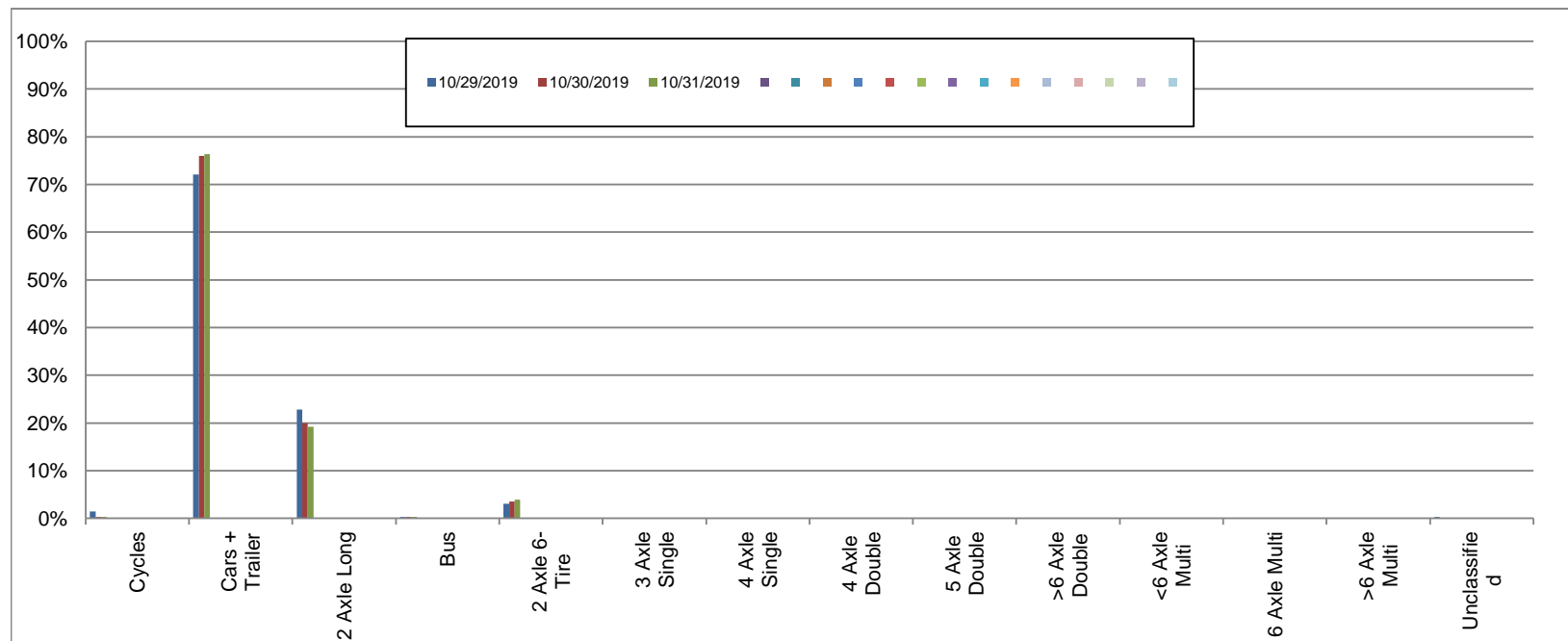
Northbound

October 29, 2019 to October 31, 2019

Daily Class Bin Percentages															Daily Class Bin Volumes															
Bin #	1	2	3	4	5	6	7	8	9	10	11	12	13	14	1	2	3	4	5	6	7	8	9	10	11	12	13	14	Total Volume	
Bin Class	Cycles	Cars + Trailer	2 Axle Long	Bus	2 Axle 6-Tire	3 Axle Single	4 Axle Single	4 Axle Double	5 Axle Double	>6 Axle Double	<6 Axle Multi	6 Axle Multi	>6 Axle Multi	Unclassified	Cycles	Cars + Trailer	2 Axle Long	Bus	2 Axle 6-Tire	3 Axle Single	4 Axle Single	4 Axle Double	5 Axle Double	>6 Axle Double	<6 Axle Multi	6 Axle Multi	>6 Axle Multi	Unclassified		
10/29/2019	1.4%	72.1%	22.8%	0.3%	3.1%	0.0%	0.0%	0.0%	0.0%	0.0%	0.0%	0.0%	0.0%	0.3%	5	256	81	1	11	0	0	0	0	0	0	0	0	0	1	355
10/30/2019	0.3%	76.0%	19.9%	0.3%	3.5%	0.0%	0.0%	0.0%	0.0%	0.0%	0.0%	0.0%	0.0%	0.0%	1	259	68	1	12	0	0	0	0	0	0	0	0	0	0	341
10/31/2019	0.3%	76.3%	19.2%	0.3%	3.9%	0.0%	0.0%	0.0%	0.0%	0.0%	0.0%	0.0%	0.0%	0.0%	1	255	64	1	13	0	0	0	0	0	0	0	0	0	0	334
Total	0.7%	74.8%	20.7%	0.3%	3.5%	0.0%	0.0%	0.0%	0.0%	0.0%	0.0%	0.0%	0.0%	0.1%	7	770	213	3	36	0	0	0	0	0	0	0	0	1	1030	

Class Data Summary

Bin #	1	2	3	4	5	6	7	8	9	10	11	12	13	14	Total Volume
Bin Class	Cycles	Cars + Trailer	2 Axle Long	Bus	2 Axle 6-Tire	3 Axle Single	4 Axle Single	4 Axle Double	5 Axle Double	>6 Axle Double	<6 Axle Multi	6 Axle Multi	>6 Axle Multi	Unclassified	Total Volume
Survey Total	7	770	213	3	36	0	0	0	0	0	0	0	0	1	1030
% Total	0.7%	74.8%	20.7%	0.3%	3.5%	0.0%	0.0%	0.0%	0.0%	0.0%	0.0%	0.0%	0.0%	0.1%	100%
Accumulated %	0.7%	75.4%	96.1%	96.4%	99.9%	99.9%	99.9%	99.9%	99.9%	99.9%	99.9%	99.9%	99.9%	100.0%	
Inv. Accum. %	99.3%	24.6%	3.9%	3.6%	0.1%	0.1%	0.1%	0.1%	0.1%	0.1%	0.1%	0.1%	0.1%	0.0%	



Classification Descriptions

Bin #	Bin Description
1	Motorcycles
2	Passenger cars, including those with recreational trailers
3	2-axle pick-ups, vans, and RVs, including those with recreational trailers
4	Buses
5	2-axle, 6-tire single units
6	3-axle single units
7	4-axle single units
8	3-axle or 4-axle double unit
9	5-axle double unit
10	6-, 7-, or 8-axle double unit
11	5-axle multiple unit
12	6-axle multiple unit
13	7-or-more-axle multiple unit
14	Vehicles that could not be classified

Site notes:

Dysart Rd between Gorge Rd W and Obed Ave

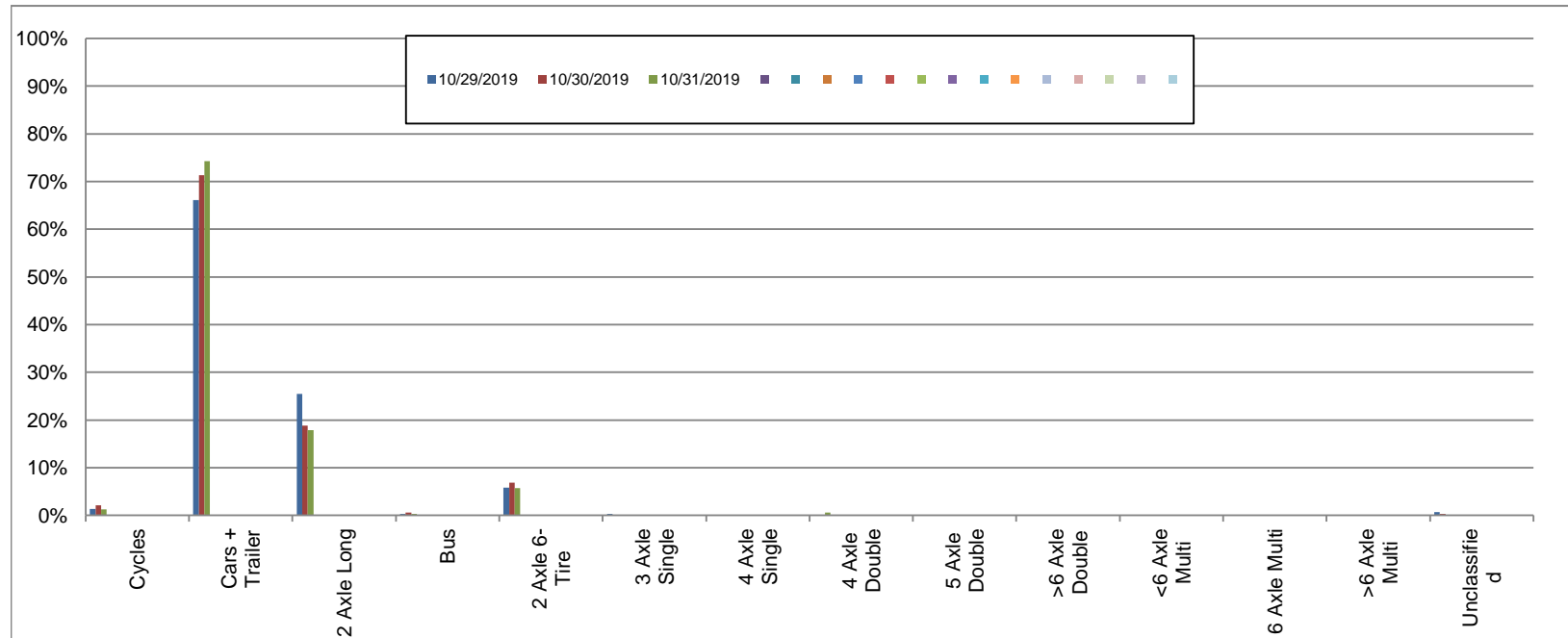
Southbound

October 29, 2019 to October 31, 2019

Daily Class Bin Percentages															Daily Class Bin Volumes											Total Volume				
Bin #	1	2	3	4	5	6	7	8	9	10	11	12	13	14	1	2	3	4	5	6	7	8	9	10	11		12	13	14	
Bin Class	Cycles	Cars + Trailer	2 Axle Long	Bus	2 Axle 6-Tire	3 Axle Single	4 Axle Single	4 Axle Double	5 Axle Double	>6 Axle Double	<6 Axle Multi	6 Axle Multi	>6 Axle Multi	Unclassified	Cycles	Cars + Trailer	2 Axle Long	Bus	2 Axle 6-Tire	3 Axle Single	4 Axle Single	4 Axle Double	5 Axle Double	>6 Axle Double	<6 Axle Multi	6 Axle Multi	>6 Axle Multi	Unclassified		
10/29/2019	1.4%	66.1%	25.4%	0.3%	5.8%	0.3%	0.0%	0.0%	0.0%	0.0%	0.0%	0.0%	0.0%	0.7%	4	195	75	1	17	1	0	0	0	0	0	0	0	0	2	295
10/30/2019	2.1%	71.3%	18.8%	0.6%	6.9%	0.0%	0.0%	0.0%	0.0%	0.0%	0.0%	0.0%	0.0%	0.3%	7	239	63	2	23	0	0	0	0	0	0	0	0	0	1	335
10/31/2019	1.2%	74.2%	17.9%	0.3%	5.8%	0.0%	0.0%	0.6%	0.0%	0.0%	0.0%	0.0%	0.0%	0.0%	4	245	59	1	19	0	0	2	0	0	0	0	0	0	0	330
Total	1.6%	70.7%	20.5%	0.4%	6.1%	0.1%	0.0%	0.2%	0.0%	0.0%	0.0%	0.0%	0.0%	0.3%	15	679	197	4	59	1	0	2	0	0	0	0	0	3	960	

Class Data Summary

Bin #	1	2	3	4	5	6	7	8	9	10	11	12	13	14	Total Volume
Bin Class	Cycles	Cars + Trailer	2 Axle Long	Bus	2 Axle 6-Tire	3 Axle Single	4 Axle Single	4 Axle Double	5 Axle Double	>6 Axle Double	<6 Axle Multi	6 Axle Multi	>6 Axle Multi	Unclassified	Total Volume
Survey Total	15	679	197	4	59	1	0	2	0	0	0	0	0	3	960
% Total	1.6%	70.7%	20.5%	0.4%	6.1%	0.1%	0.0%	0.2%	0.0%	0.0%	0.0%	0.0%	0.0%	0.3%	100%
Accumulated %	1.6%	72.3%	92.8%	93.2%	99.4%	99.5%	99.5%	99.7%	99.7%	99.7%	99.7%	99.7%	99.7%	100.0%	
Inv. Accum. %	98.4%	27.7%	7.2%	6.8%	0.6%	0.5%	0.5%	0.3%	0.3%	0.3%	0.3%	0.3%	0.3%	0.0%	



Classification Descriptions

Bin #	Bin Description
1	Motorcycles
2	Passenger cars, including those with recreational trailers
3	2-axle pick-ups, vans, and RVs, including those with recreational trailers
4	Buses
5	2-axle, 6-tire single units
6	3-axle single units
7	4-axle single units
8	3-axle or 4-axle double unit
9	5-axle double unit
10	6-, 7-, or 8-axle double unit
11	5-axle multiple unit
12	6-axle multiple unit
13	7-or-more-axle multiple unit
14	Vehicles that could not be classified

Site notes: